



ABC System

# AV Program Report

by Analytix

*Samples Work*

# Room Count

Sr. No.	Room Types	2nd	3rd	Total
1	4 Pax Meeting Room	5	5	10
2	6 Pax Meeting Room	4	7	11
3	8 Pax Meeting Room	1	2	3
4	14 Pax Meeting Room	1	0	1
5	30 Seater Board Room	1	0	1
6	17 Seat Class Room	0	1	1
7	Cabin	16	4	20
8	Breakout Area	4	4	8
9	Reception and Waiting Lounge	1	0	1
10	Recreational area	1	0	1
11	Café	1	0	1
			<b>Total</b>	<b>58</b>

# 4 Pax Meeting Room



A 4 pax room system allows small groups of 4 – 5 people to conduct more focused sessions either in-person or remotely via video-conferencing in smaller, well-acoustically treated and isolated spaces. These Focus Rooms support larger Team or Conferencing spaces, with users being able to bring their own device to connect to the provided LCD display, Logitech conference camera/speakerphone and controlled using the Logitech Tap interface to conduct native Teams meetings.



## Video

- 49" wall mounted LCD display
- Wired connectivity (HDMI cable with USB-C and miniDP adapters)
- Microsoft Teams video conferencing



## Audio

- Logitech Meetup integrated speaker and



## Control

- Logitech Tap table-mounted touchscreen controller for Teams meetings



# 4 Pax Meeting Room



Typical- AV Rendering



Typical Room Furniture Layout

# 6 and 8 Pax Meeting Room



The audio-visual technology in a this room are essentially identical to the aforementioned 4 Pax Room system. The display and conference cameras will typically be mounted towards the end of the meeting room table, with display sizes and mounting hardware dependant on room design and layout.



## Video

- 75" wall-mounted LCD display
- Wired connectivity (HDMI cable with USB-C and miniDP adapters)
- Microsoft Teams video conferencing
- Logitech TAP



## Audio

- Logitech MeetUp conferencing camera

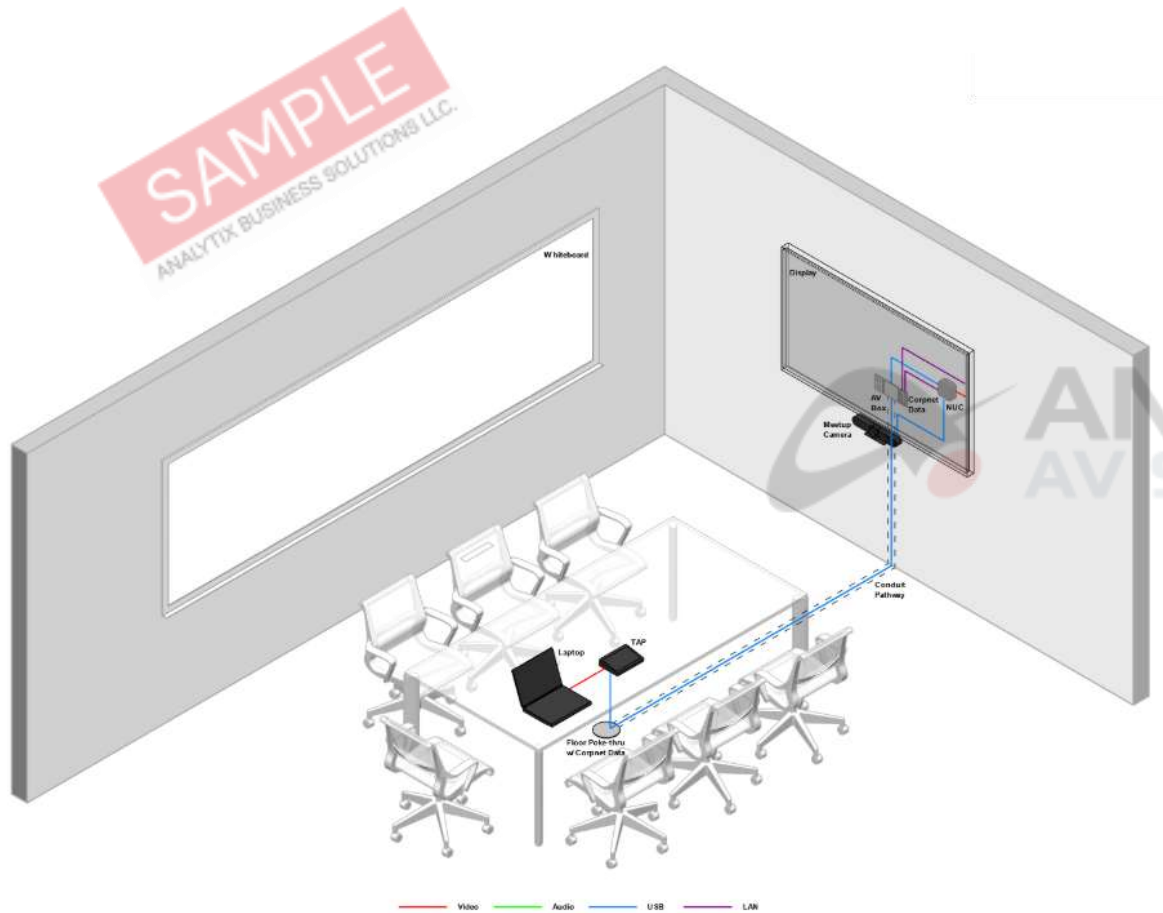


## Control

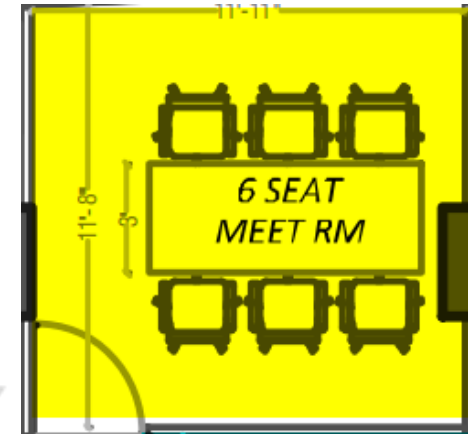
- Logitech Tap table-mounted touchscreen controller for Teams meetings



# 6 and 8 Pax Meeting Room

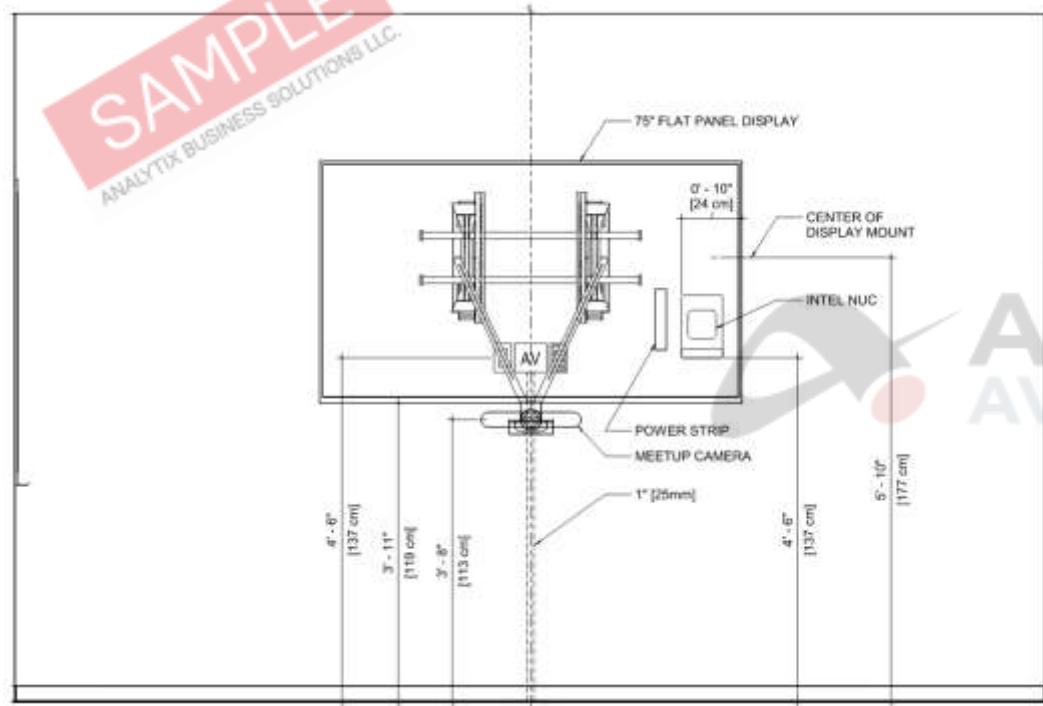


Typical- AV Rendering



Typical Room Furniture Layout

# 6 and 8 Pax Meeting Room



## Display

- 1770 mm AFFL to display centre

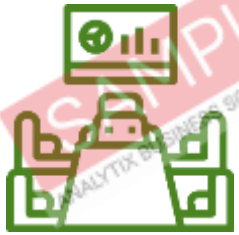
## Front wall

- Power requirements: 2 GPO's
- Corpnet requirements: 2 ports
- Equipment bracket behind display
- 164 x 250 mm (W x H)

## Table

- Grommets
  - $\phi$  50 mm at centre of table for Logitech Tap touchscreen
- AV table box / cable cubby: 1
- Power requirements: 1 GPO

# 14 Pax Meeting Room



This Conference room designs enable teams of 10-14 to conduct productive meetings and are typically a shared resource across different teams. The audiovisual system in this space will be centered on a large LCD, with Teams functionality provided by the HP Slice conferencing device, its accompanying table-mounted touch controller and the Logitech Rally system to enable both local and remote presentations.



## Video

- 85" wall-mounted LCD display for Medium Conference
- Wired connectivity (HDMI cable with USB-C and miniDP adapters)
- Microsoft Teams video conferencing



## Audio

- Logitech Rally conferencing camera and stereo front speakers



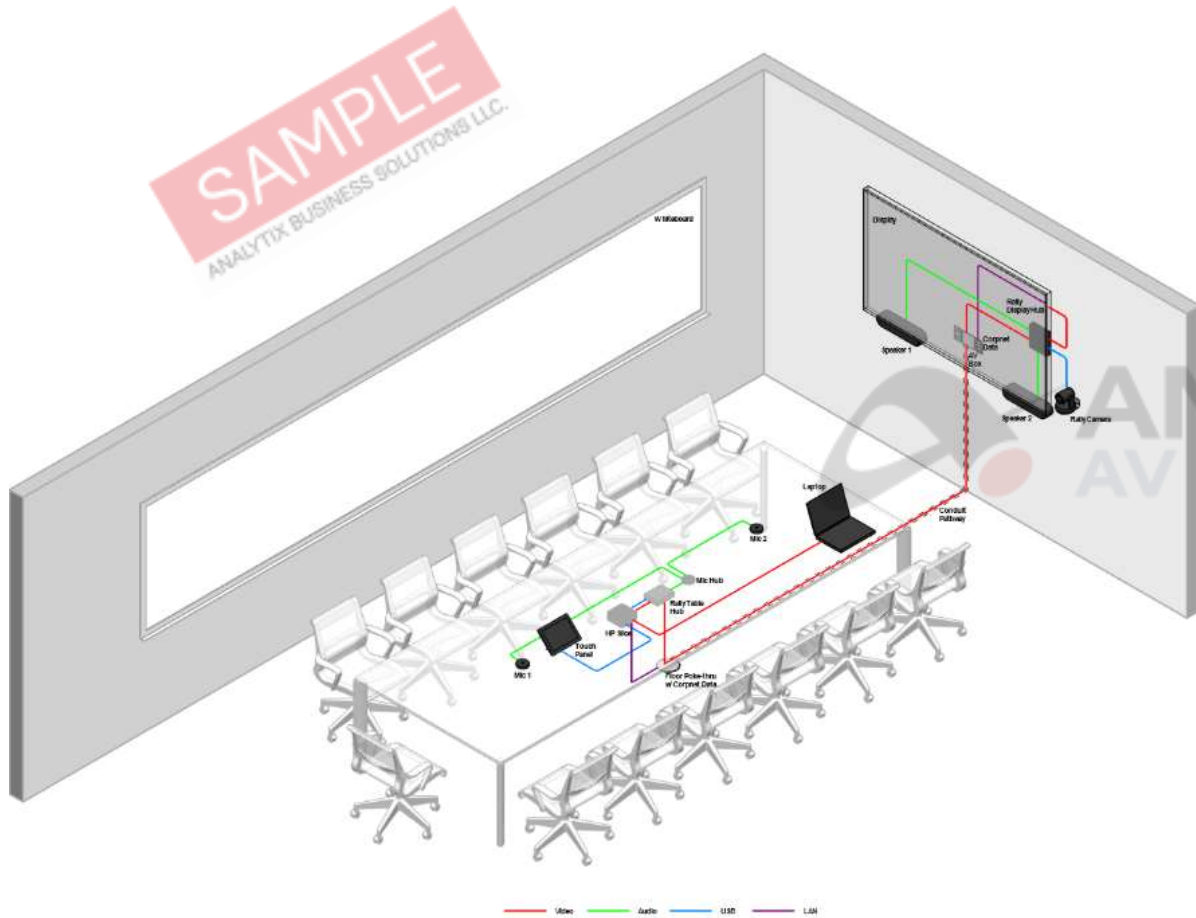
## Control

- HP Elite Slice G2 table-mounted touchscreen controller for Teams meetings

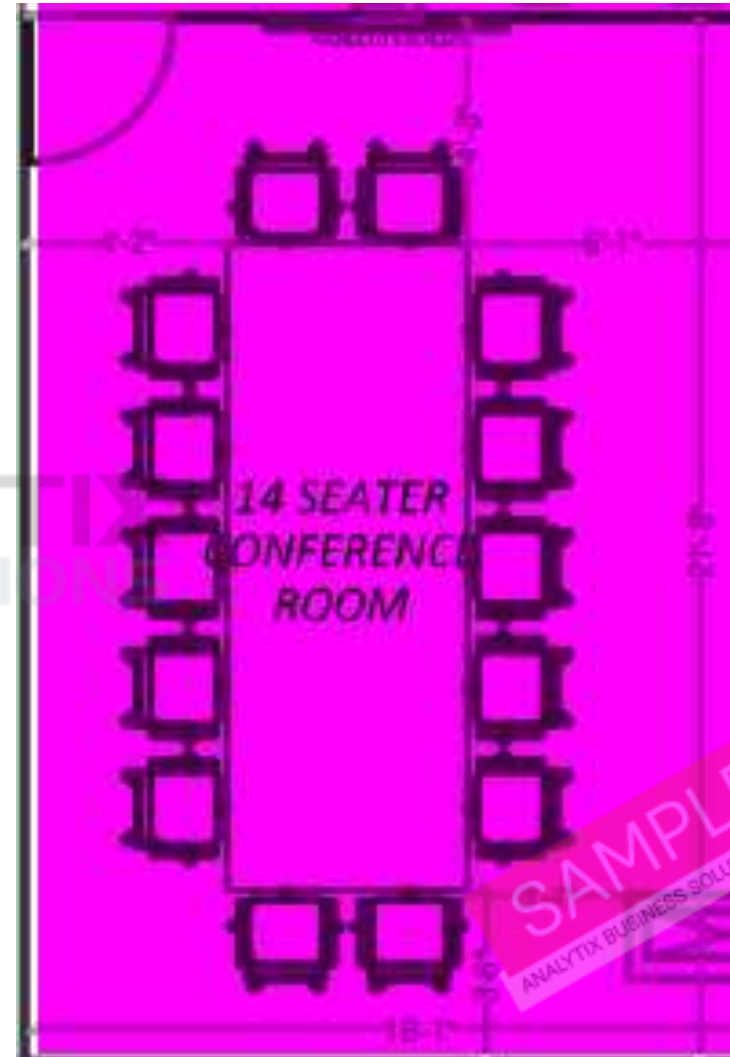




# 14 Pax Meeting Room

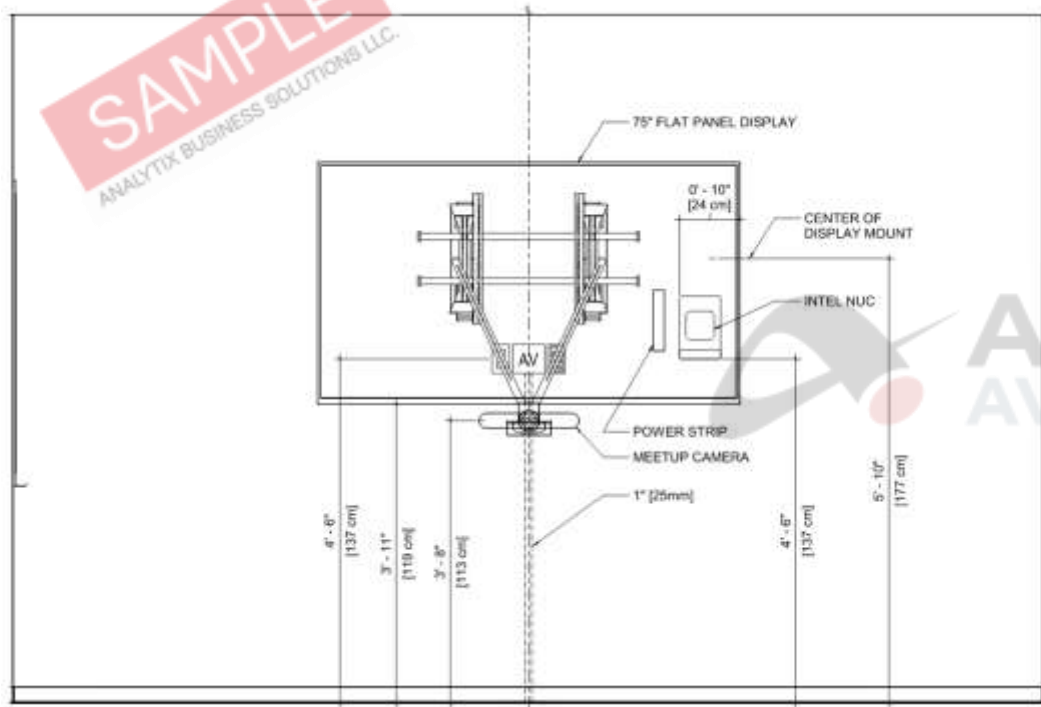


Typical- AV Rendering



Typical Room Furniture Layout

# 6 and 8 Pax Meeting Room



## Display

- 1780 mm AFFL to display centre

## Front wall

- Power requirements: 2 GPO's
- Corpnet requirements: 1 port
- Equipment bracket behind display
- 164 x 250 mm (W x H)

## Table

- Grommets
  - $\varnothing$  50 mm at centre of table for HP Elite Slice touchscreen
  - $\varnothing$  25 mm at either ends of the table for microphones
- AV table box / cable cubby: 1
- Power requirements: 2 GPO's
- Corpnet requirements: 1 port
- Equipment tray required under table to mount following devices
  - Table Hub: 176 x 138 x 40 mm (W x D x H)
  - Teams device: 165 x 165 x 112 mm (W x D x H)

# Multi-Purpose Rooms (MPR)

- Multi-Purpose Rooms are large flexible spaces that support a wide variety of functions, including training sessions and lectures, presentations, conferences and large internal and external events.
- All MPR spaces will allow a presenter to initiate a local in-room presentation or set up a Teams conference from the lectern mounted Crestron control panel. The Crestron control panel will also allow an advanced level of system and room control, enabling control of all audio and video routes, conferencing and volume controls, and compatible integrated lights and blinds. The Triple Combinable MPR may be used in any physical combination, enabling the rooms to be used as one large contiguous space.



*Rendering only indicative and for illustrative purposes*